



## Product Guide 2026



# Table of Contents

About Sureline	1
Polyurethane Foams	2
Polyethylene Foams	6
Crosslinked Polyethylene	8
Latex	10
Fiber Products	12
Packaging	14
Institutional Mattresses	16
Consumer Products	17
Athletics	18
Fire Rated Products	19
Acoustic and Wall Panels	20







## Company Overview

We are a leading Canadian foam converter and manufacturer serving the furniture, bedding, medical, commercial, consumer, aviation, packaging, athletic, and many other industries. Based in Calgary, Alberta, Sureline Foam is a family owned business committed to producing high quality foam solutions using premium raw materials.

Our Company is committed to environmental responsibility and have made industry leading investments in circular manufacturing. Excess foam is reclaimed, converted back into usable raw material, or recycled to help us minimize waste throughout the production process.

Customer service remains our top priority, and we work closely with clients to build flexible, reliable supply programs tailored to their needs.

# Polyurethane Foams

## Open Cell



### Conventional

Conventional foam has a wide variety of uses. We carry varieties from super soft to extra firm.

Commonly used in upholstery, mattresses, gymnastics mats. The black varieties are commonly used in packaging and acoustics.

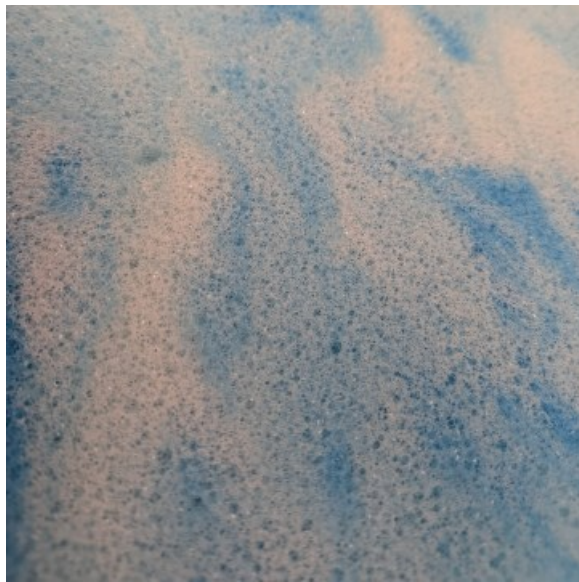


### High Resiliency

High resiliency foam is a higher density foam with a longer lasting life than the conventional foams of the same ILD.

Most commonly used in upholstery.

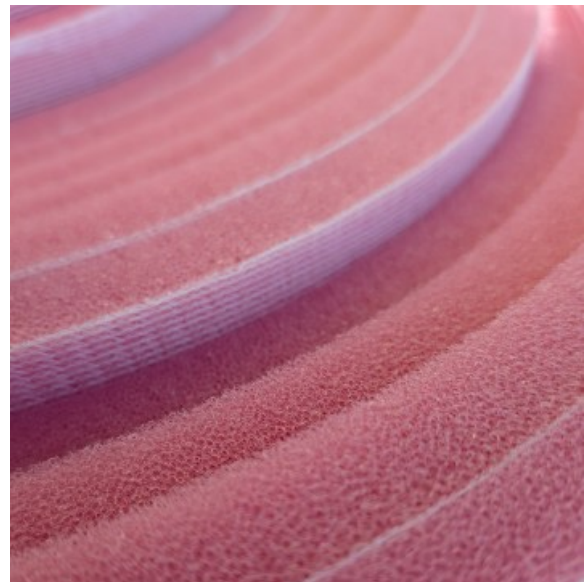




## Specialty

Specialty foams include reticulated foams, and a variety of memory foams.

These foams have a more specific use to them in comparison to the conventional foams.



## Rolls

The rolls are specifically kept in stock for your convenience.

We carry an all-purpose 1033 foam roll in three different thicknesses.

As well as tricot, also called sew foam, in 1/4" and 1/2" thicknesses.

# Polyurethane Foams

## Open Cell

Conventional Polyurethane				
Grade	Color	Density	ILD	Size
1033BK	Charcoal	1	33	82"x108"
1215	White	1.2	15	60"x80"
1236	White	1.2	36	80"x108"
1337B	Blue	1.3	37	80"x86"
1545	White	1.5	40	60"x80"
1570BK	Charcoal	1.5	70	86"x108"
1570WT	White	1.5	70	76"x80"
1330AS	Pink	1.3	30	
1836	White	1.8	36	60"x80"
2026	Yellow	2	25	76"x82"
2050	Yellow	2	50	76"x82"
2060	White	2	60	80"x100"
2080BK	Charcoal	2	80	82"x102"
250-150BK	Charcoal	2.5	150	82"x96"

High Resiliency Polyurethane				
Grade	Color	Density	ILD	Size
UC20	Rose	2.3	20	82"x102"
UC25	Blue	2.3	25	82"x108"
UC35	Yellow	2.9	35	82"x89"
UC45	Pink	2.7	40	82"x108"
UC50FR	Green	2.5	55	54"x82"
UC60	Yellow	2.9	60	82"x89"



## Specialty Polyurethane Foams

Grade	Color	Density	ILD	Size
Ester 2lb	Charcoal	2	40	54"x72"
DriFast 33	White	1.7	30	50"x110"
DriFast 50	White	1.7	50	50"x110"
PPI30	Black	1.5	30	52"x110"
Hypurgel 12	Teal	3	12	76"x80"
Gel swirl	Blue	4	14	76"x80"
Serene 12	Blue	2.5	12	76"x80"
Serene 24	Blue	2.5	22	76"x80"

## Rolls

Grade	Color	Density	ILD	Size
1033 Roll	White	1	33	0.25"x84"x600"
1033 Roll	White	1	33	0.5"x84"x300"
1033 Roll	White	1	33	1"x84"x300"
1860 Tricot (Scrim Backed)	Pink	1.8	60	0.25"x56"x600"
1860 Tricot (Scrim Backed)	Pink	1.8	60	0.5"x56"x600"

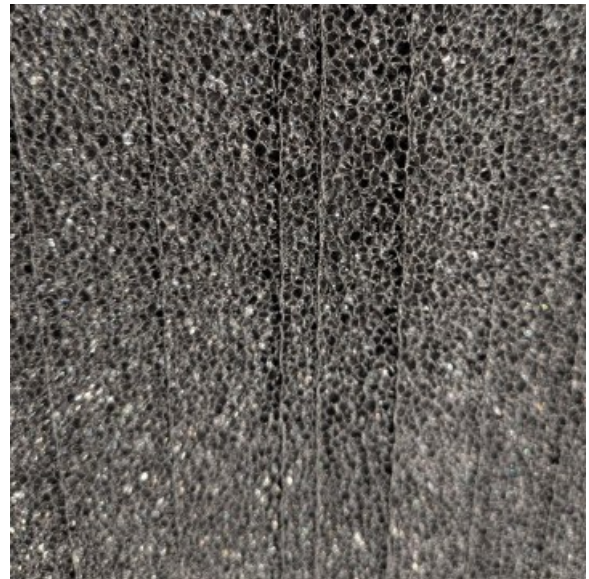
# Polyethylene Foams

## Closed Cell

### Laminated Plank

Laminated planks are thin slices of Polyethylene foam heat laminated together to create the desired thickness.

Our black variety is a recycled foam, so it is both better for the environment, and more cost effective.



### Extruded Plank

Extruded planks are one solid piece of polyethylene foam. Due to this the maximum thickness is 2", which we can cut down to the desired height.

Our extruded planks come in the firmer 2.2lb density.

### Engineered Laminated Plank

Grade	Color	Density	Description	Size
1.2lb PE	White	1.2	PE LAM 1.2 NATURAL	1"x48"x108"
1.2lb PE	White	1.2	PE LAM 1.2 NATURAL	2"x48"x108"
1.2lb PE	White	1.2	PE LAM 1.2 NATURAL	4"x48"x108"
1.7BK PE	Black	1.7	PE LAM 1.7 RENEW BK	0.5"x48"x108"
1.7BK PE	Black	1.7	PE LAM 1.7 RENEW BK	1"x48"x108"
1.7BK PE	Black	1.7	PE LAM 1.7 RENEW BK	1.5"x48"x108"
1.7BK PE	Black	1.7	PE LAM 1.7 RENEW BK	2"x48"x108"
1.7BK PE	Black	1.7	PE LAM 1.7 RENEW BK	3"x48"x108"
1.7BK PE	Black	1.7	PE LAM 1.7 RENEW BK	4"x48"x108"
1.7BK PE	Black	1.7	PE LAM 1.7 RENEW BK	10"x48"x108"

### Engineered Extruded Plank

Grade	Color	Density	Description	Size
2.2lb PE	White	2.2	PE PLK 2.2 NATURAL	2"x24"x108"
2.2lb PE	Black	2.2	PE PLK 2.2BLACK	2"x24"x108"

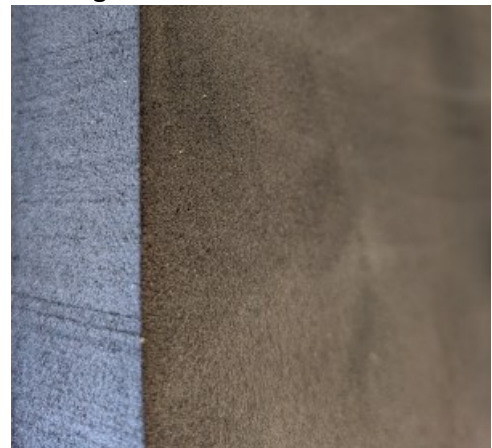
# Crosslinked Polyethylene

## Closed Cell

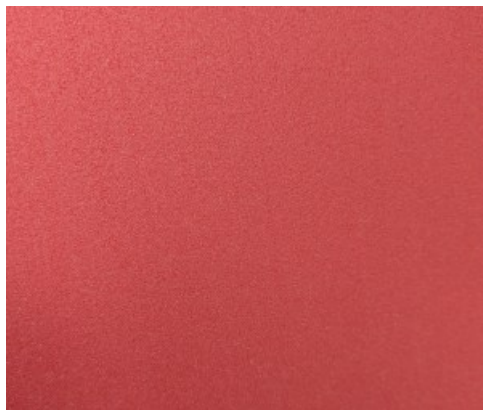
Crosslinked Polyethylene (XLPE)*				
Grade	Color	Density	Description	Size
2# XLPE	Charcoal	2	2lb XLPE, 2 stage	4"x48"x96"
4# XLPE	Charcoal	4	4lb XLPE, 2 stage	4"x48"x96"
6# XLPE	Charcoal	6	6lb XLPE, 2 stage	4"x48"x96"

Crosslinked Polyethylene is a closed cell foam with smaller bubbles and a cleaner look.

\*More grades and colours available upon request



Crosslinked Polyethylene Zote				
Grade	Color	Density	Description	Size
WZ30	Black	1.9	Plastazote	2"x48"x 80"
WZ30	Blue	1.9	Plastazote	2"x48"x 80"
WZ30	Red	1.9	Plastazote	2"x48"x 80"



Zote foam is a crosslinked polyethylene with a low density. It is lightweight, latex free, non-toxic, and hypoallergenic. Other qualities include temperature resistance, and thermal conductivity.

### Crosslinked Polyethylene (EVA)

Grade	Color	Density	Description	Size
2# EVA	Charcoal	2	2lb EVA, 2 stage	4"x48"x96"
4# EVA	Charcoal	4	4lb EVA, 2 stage	4"x48"x96"
2# XEV	Natural	2	2lb Extruded EVA, laminated sheet	1.375"x60"x96"



EVA is a crosslinked polyethylene foam that has the EVA additive in it.

This additive adds a bounce quality to the foam. This works well for gym floors as an example.

### Crosslinked Polyethylene (irradiated Rolls)

Grade	Color	Density	Description	Size
0.125" 2# XLPE	Charcoal	2	2lb XLPE, irradiated roll	0.125"x60"x600'
0.25" 2# XLPE	Charcoal	2	2lb XLPE, irradiated roll	0.25"x60"x300'
0.375" 2# XLPE	Charcoal	2	2lb XLPE, irradiated roll	0.375"x60"x200'
0.5" 2# XLPE	Charcoal	2	2lb XLPE, irradiated roll	0.5"x60"x150'

The irradiated rolls are a crosslinked polyethylene. Qualities include, flexibility, low water absorption, chemical resistance, rot resistance.

Often used in automobiles, and poker or card tables. Useful anywhere a dense padded layer is needed.



# Latex

## GOLS Certified

### Dunlop Latex Cores

Our latex cores are GOLS certified. This means they are at least 95% organically grown latex.

GOLS latex do not contain any toxic chemicals, and are responsibly produced.



### Latex Products

We supply both latex toppers and pillows for your sleeping comfort. You can purchase our latex on its own, or we can supply you with an organic cotton cover to go with it.



## 100% Natural Latex Cores GOLS Certified

Soft			
Grade	Density	Description	Size
D60 Twin	4	Natural Organic Latex 20ILD D60	6"x37.75"x74.5"
D60 Twin XL	4	Natural Organic Latex 20ILD D60	6"x37.75"x79.5"
D60 Double	4	Natural Organic Latex 20ILD D60	6"x54"x74.5"
D60 Queen	4	Natural Organic Latex 20ILD D60	6"x59.5"x79.5"
D60 King	4	Natural Organic Latex 20ILD D60	6"x76"x79.5"
D60 Cali King	4	Natural Organic Latex 20ILD D60	6"x72"x83.5"
Medium			
Grade	Density	Description	Size
D75 Twin	5	Natural Organic Latex 30ILD D75	6"x37.75"x74.5"
D75 Twin XL	5	Natural Organic Latex 30ILD D75	6"x37.75"x79.5"
D75 Double	5	Natural Organic Latex 30ILD D75	6"x54"x74.5"
D75 Queen	5	Natural Organic Latex 30ILD D75	6"x59.5"x79.5"
D75 King	5	Natural Organic Latex 30ILD D75	6"x76"x79.5"
D75 Cali King	5	Natural Organic Latex 30ILD D75	6"x72"x83.5"
Firm			
Grade	Density	Description	Size
D90 Twin	6	Natural Organic Latex 44ILD D90	6"x37.75"x74.5"
D90 Twin XL	6	Natural Organic Latex 44ILD D90	6"x37.75"x79.5"
D90 Double	6	Natural Organic Latex 44ILD D90	6"x54"x74.5"
D90 Queen	6	Natural Organic Latex 44ILD D90	6"x59.5"x79.5"
D90 King	6	Natural Organic Latex 44ILD D90	6"x76"x79.5"
D90 Cali King	6	Natural Organic Latex 44ILD D90	6"x72"x83.5"

## Latex Pillows

Grade	Description	Size
Talay Queen	Talay Rejuvenate Pillow Queen - High Loft	6"x18"x28"
Talay King	Talay Rejuvenate Pillow King - High Loft	6"x18"x34"
Nova Contour Small	GOLS Contour Pillow	5"x16"x21"
Nova Contour Big	GOLS Contour Pillow	6"x16"x22"

# Fiber Products

## Our Products

### Fiber Products - Bonded Polyester

Grade	Description	Size
4oz	Roll Bonded Poly 1/2"	60"x45M
8oz	Roll Bonded Poly 7/8"	60"x30M
8oz	Roll Bonded Poly 7/8"	72"x30M
19oz	Roll Bonded Poly 2"	60"x15M

### 100% Organic Wool

Grade	Description	Size
7.2oz	Roll 100% Bonded Wool 0.875"	90"x30M
13 oz	Roll 100% Bonded Wool 1.5"	88"x27M

### Densified Fiber Cores (Fire Rated)

Grade	Description	Size
10P	PK POLY 10P	2"x38"x80"

## Bonded Polyester

Bonded Polyester is a synthetic fiber made from polyester.

It creates a plush layer on top of your upholstery foam, but can be used in many other applications.



## Wool

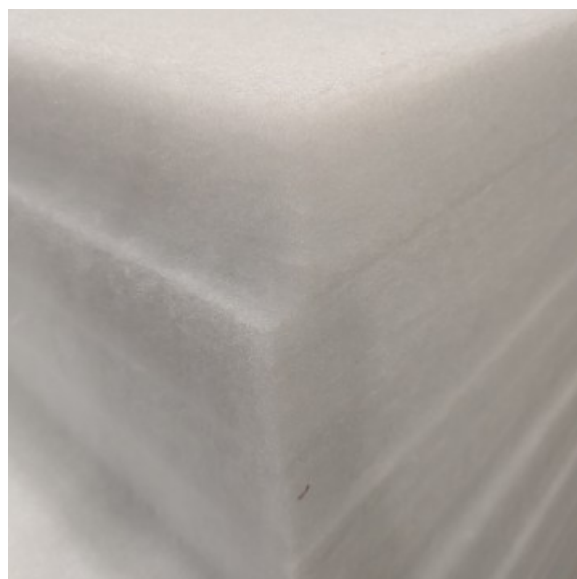
We supply rolls of natural bonded wool fiber.

These are commonly used to create a cozy top to our organic latex mattresses.

## Densified Fiber

Densified fiber is a durable material that will keep its shape well with use.

It is hydrophobic, and antimicrobial. Ours is also fire rated, making it ideal for institutional mattresses.



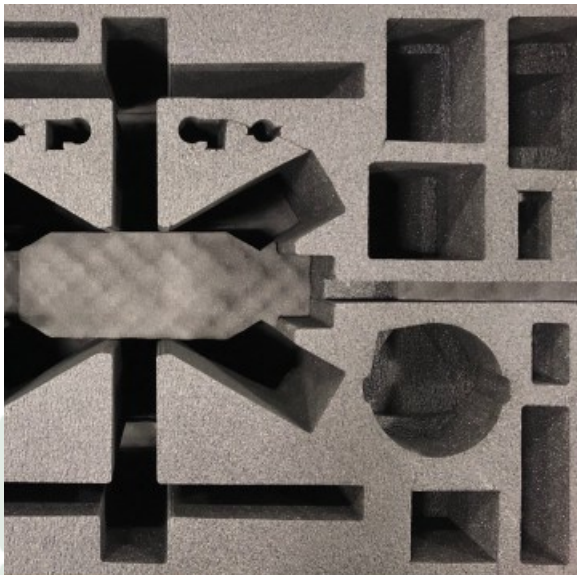
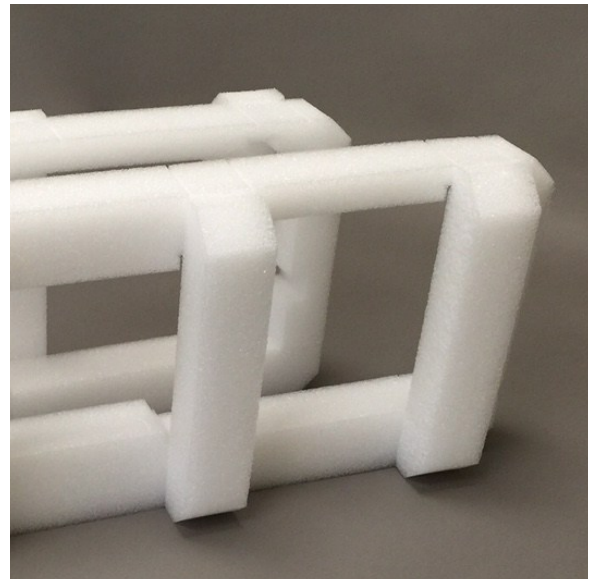
# Packaging

## Our Process

### Custom End Caps

We custom design end caps for your packaging needs.

Fitting foam around your product to fit snugly and safely within your container.



### Cases and Inserts

We commonly design inserts for any type of container.

If needed, we can also supply you with Pelican, Nanuk, and UK hardcases to fit the case insert and your products safely.





## Cutting

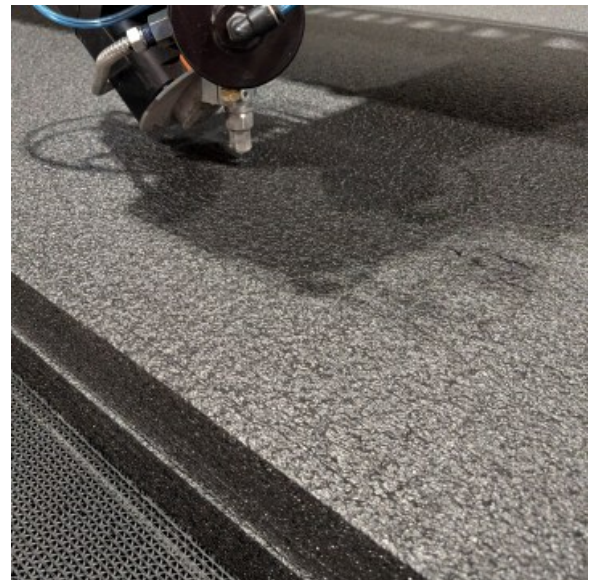
Once the CAD file has been created, our waterjet or CNC machine cut the foam. This ensures we can consistently cut the same item indefinitely with accuracy.



## CAD Design

All inserts and end caps start with a CAD drawing.

We take detailed measurements of your product and case to send to the waterjet or CNC machine.



## Assembly

Some case inserts and end caps require some assembly before we give it to you.

This might mean heat laminating layers together, or a PSA adhesive.

# Institutional Mattresses

## Specialty Mattresses



Sureline manufactures institutional mattresses for any specification and certification required.

We commonly create mattresses for, correctional facilities, shelters, summer camps, university housing, hospitals and more.

### **Sureseal**

We create sealed seam mattresses with radio frequency welded seams to provide you with a fluid proof, bed bug proof, and anti-microbial bed.

### **Sewn Seam**

We also manufacture heavy duty sewn, zippered institutional mattresses.

Customization options available for your choice of foam core, and fabric or vinyl covers.





# Consumer Products

## What We Offer

We offer on demand product supply for our retail partners.

Specializing in bed-in-a-box manufacturing.

We manufacture customizable foam and latex beds with covers sown in house.

Stocking a large inventory of bed bases as well as adjustable bed frames.

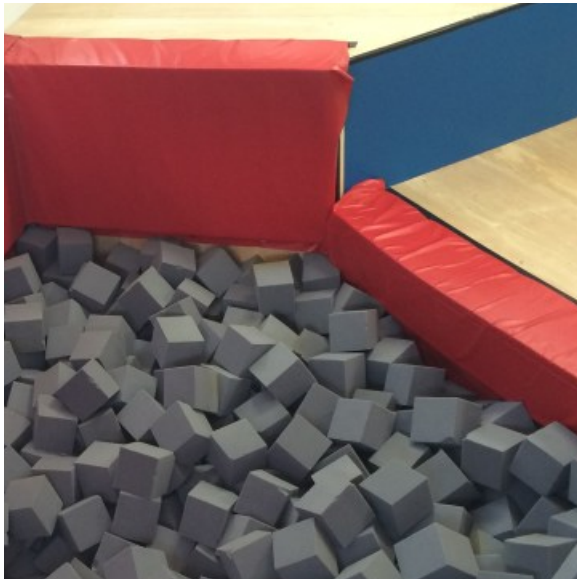
We also offer a variety of pillows from latex to memory foam. These also come in different options for shapes as well. Simple pillows, contoured, or even rippled pillows. We also carry knee bones and bolsters for your sleeping comfort.



# Athletics

Sureline manufactures many products for gymnastics use.

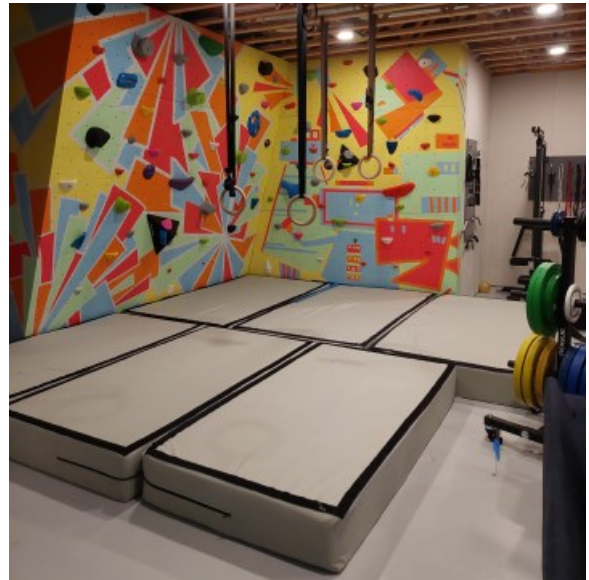
We can help you create custom pieces for your specific space and needs.



Our vinyl covered pads, can be created to all shapes and sizes.

We carry a variety of colours for the covers.

We pride ourselves in creating matts and pads that work for you and meet your needs.



We can calculate:

- How many cubes you need for your foam pit.
- Densities required for your crash matts.
- Design pit edge protection



Common products:

- Crash matts
- Vinyl covered pads
- Foam pit cubes
- Pit edge protection
- Sub floor protective padding
- Post protectors



## Fire Rated Products

### Specification sheets available



Our fire rated foams are used for a wide variety of applications. Often used in aircraft upholstery and interiors, but we also manufacture fire rated institutional mattresses.

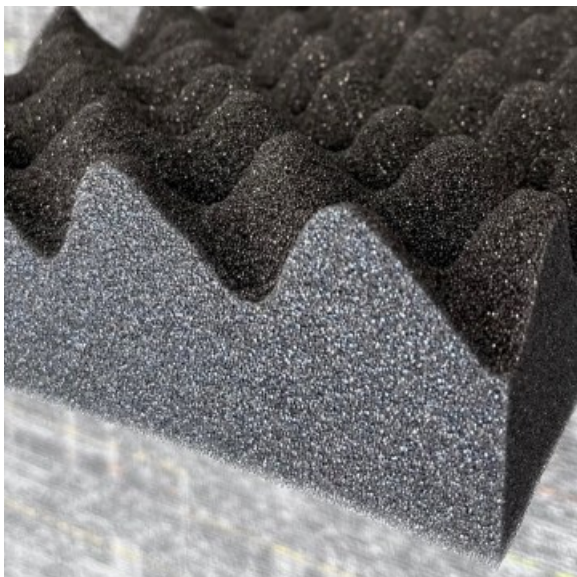
We have spec sheets for each of our fire rated foams available for your viewing.

# Acoustic and Wall Panels

## Our Products

Our sound dampening acoustic foam or wall panels are available in a variety of shapes and sizes.

Acoustic panels help to absorb sound waves more than a straight cut piece of foam. Providing you with a clearer, improved sound.



We can cut our foams into pyramid, wedgie, and convolute (also known as egg-crate) shapes. As well as into base traps for the corners of your space as well.

These foams are often cut out of our medium foam 1033BK. But are available in many other grades.



Acoustic Panels				
Standard Items		Grade	Description	Size
Pyramid				
2in x 1ft Pyramid Panel		1033BK*	2"x12"x12" Pyramid	2"x12"x12"
3in x 1ft Pyramid Panel		1033BK*	3"x12"x12" Pyramid	3"x12"x12"
2in x 2ft Pyramid Panel		1033BK*	2"x24"x24" Pyramid	2"x24"x24"
3in x 2ft Pyramid Panel		1033BK*	3"x24"x24" Pyramid	3"x24"x24"
Wedgie				
2in x 1ft Wedgie Panel		1033BK*	2"x12"x12" Wedgie	2"x12"x12"
3in x 1ft Wedgie Panel		1033BK*	3"x12"x12" Wedgie	3"x12"x12"
2in x 2ft Wedgie Panel		1033BK*	2"x24"x24" Wedgie	2"x24"x24"
3in x 2ft Wedgie Panel		1033BK*	3"x24"x24" Wedgie	3"x24"x24"
Bass Trap				
12"x12"x12" Bass Trap		1033BK*	12"x12"x12" Bass Trap	12"x12"x12"
Convolute				
1.5/0.5"x60"x80" Conv.		1033BK*	1.5/0.5"x60"x80" 1033BK	1.5"x60"x80"
Misc.				
PSA, for 12"x12" Foam 9"x9"		3M	Pressure Sensitive Adhe-	9"x9"
PSA, for 24"x24" Foam 18"x18"		3M	Pressure Sensitive Adhe-	18"x18"

\*Available Acoustic Panel Grads: 1033BK, 1570BK, 2080BK, 2# Ester  
Order items in pairs



## Headquarters

120, 225 23 Street NE  
Calgary, AB Canada T2E 5S8

## Contact

[sales@sureline.ca](mailto:sales@sureline.ca)  
[info@sureline.ca](mailto:info@sureline.ca)  
[service@sureline.ca](mailto:service@sureline.ca)  
+1 403 274 7721

[www.Sureline.ca](http://www.Sureline.ca)